

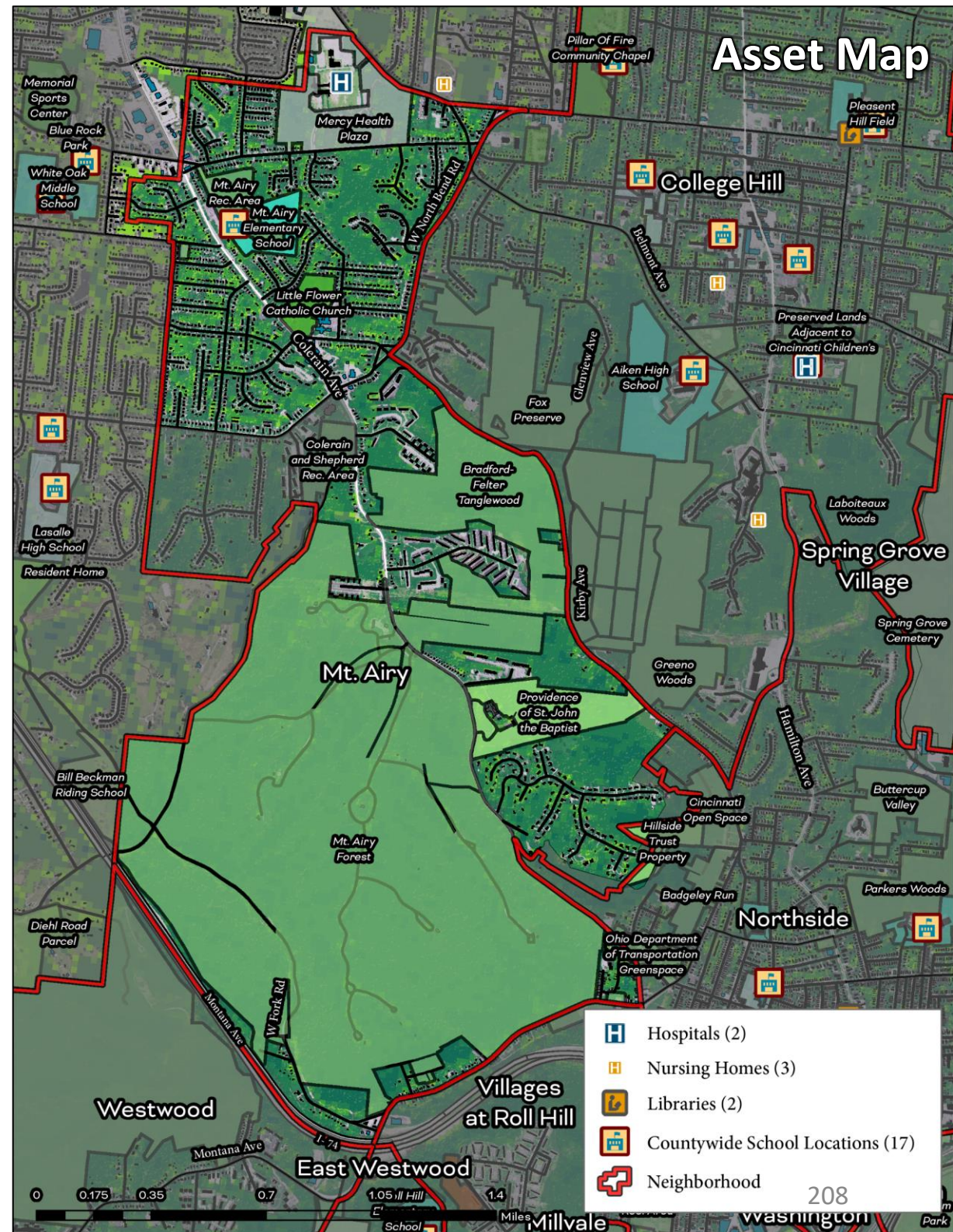
# Mount Airy

## Cincinnati Neighborhood Profile

Mt. Airy is a primarily Black neighborhood (59.8%) with more than ¼ of the residents under the age of 18 (26.5%). Life expectancy is 75.4 years - (ranked 17th) and the neighborhood is extremely green. Tree canopy (51.1%), parks and greenspaces (79.8%), and all vegetated areas (81.3%) rank either first or second out of all the neighborhoods assessed in the City.

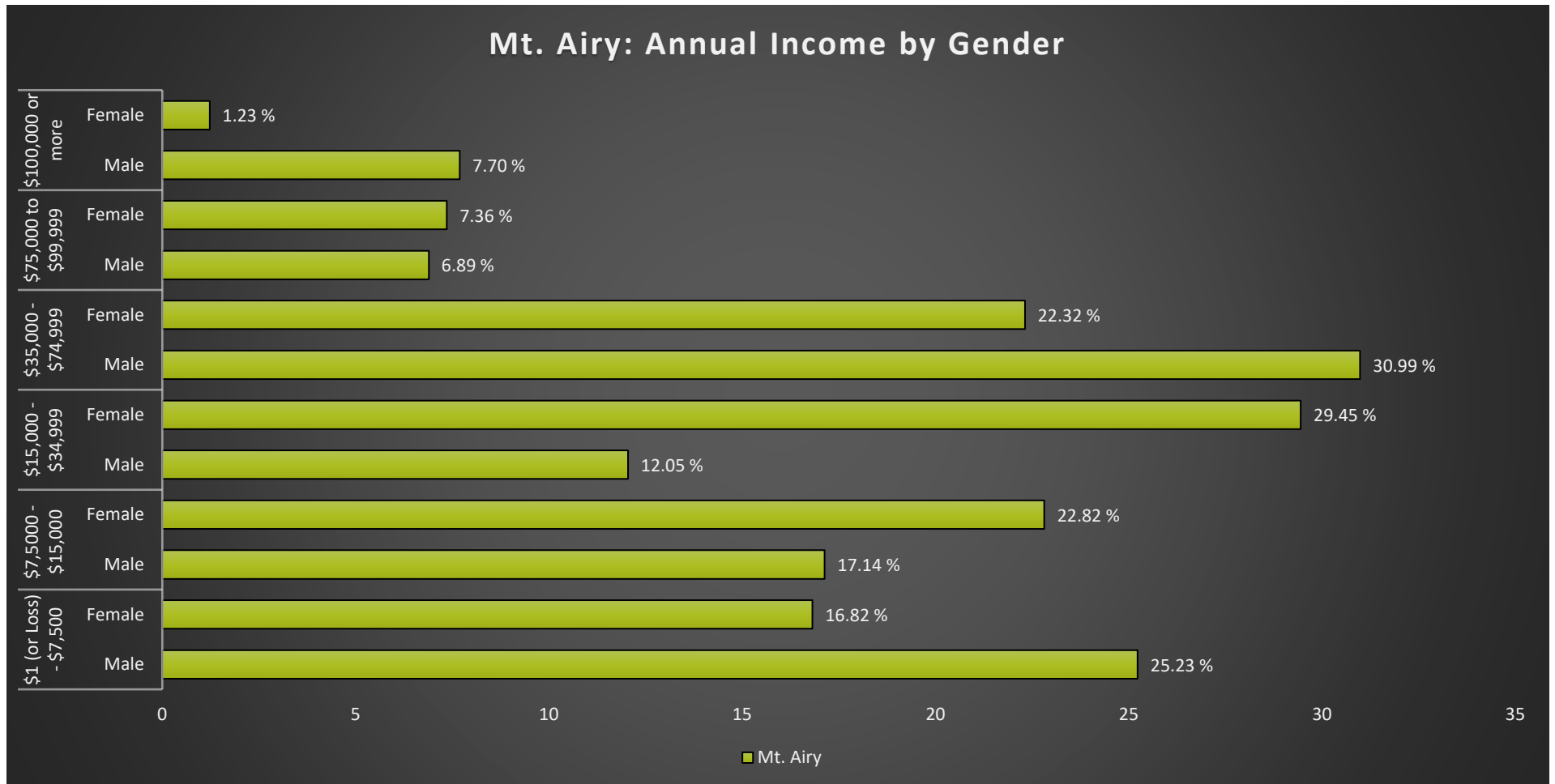
Traffic and Air pollution exposure is all limited (mostly “low” or “moderate”) though PM 2.5 is “Very High”. All of the health indicators are in the bottom half of the indicators and 42.7% of the population has high blood pressure and 47% deals with obesity.

33% of the residents live in poverty and 29.3% rely on SNAP benefits. While 63.8% of the residents rent their homes, 25.2% of renters are spending more than 50% of their income on housing and utilities.



# Mount Airy

## Cincinnati Neighborhood Profile



Mount Airy Notable Indicators		
Tree Canopy Index	Renters Spending 50% of Income or More on Rent + Utilities	Persons with low income and low food access
1st (51.1%)	25.20%	43.30%

# Mount Airy

## Cincinnati Neighborhood Profile

People			
Indicator	Rank	%	# of Persons
Population	-	-	7,547
Persons over 65	27	12.8%	963
Persons 17 and Under	35	26.5%	2,000
Children Living w/ Grandparents	33	1.9%	143
Race/Ethnicity:			
Black	-	59.8%	4,512
white	-	31.4%	2,370
Asian	-	2.1%	158
Other	-	6.7%	507
Latinx	-	5.3%	400
Persons 5 and Older in Households w/ Limited English Ability	34	1.3%	100

Health			
Indicator	Rank	Value	
Life Expectancy	17	75.4 years	-
Disease Prevalence Estimates:			
	Rank of % w/Condition	% with Condition	Persons with Condition
Asthma	37	13.8%	1,044
Cancer	34	6.1%	461
Diabetes	34	17.8%	1,343
High Blood Pressure	34	42.7%	3,223
Heart Disease	33	8.8%	666
Kidney Disease	32	3.9%	298
Obesity	36	47.0%	3,544
Lack of Health Insurance	33	15.6%	1,176
Persons w/ Independent Living Difficulty	29	3.1%	233
Persons Living w/ Disability	33	16.5%	1,243

Ecosystems and Infrastructure		
Indicator	Rank	Value
Tree Canopy Coverage	1	51.1%
Greenness of Land Surface	2	81.3%
Percent Land in Parks and Greenspaces	1	79.8%
Impervious Surface	2	14%
Heat Island Exposure	12	0.14
Walkability	-	Least Walkable to Below Average
Persons w/ Low-Income and Low Food Access	30	44.3%
Transit Accessibility	-	Poor to Good
Daytime Population vs. Resident Population	4	40.5%
Commuters Leaving Each Day	-	2,751
Commuters Using Public Transit	33	11.2%

# Mount Airy

## Cincinnati Neighborhood Profile

Socio-Economic Indicators			
Indicator	Rank	%	#
Persons Living in Poverty	33	33.0%	2,493
SNAP Recipient Households	31	29.3%	1,005
Educational Attainment:			
Less than High School	-	6.8%	-
HS or Equivalent	-	20.8%	-
Some College	-	17.1%	-
Associate's Degree	-	5.7%	-
Bachelor's Degree or Higher	-	14.4%	-
Educational Attainment Index	28	0.39	-
Extreme Housing Burdens:			
Renter-Occupied Housing (as % of All Housing Units)	25	63.8%	2,192
Renters Spending 30% of Income or More on Rent + Utilities	39	40.1%	1,378
Renters Spending 50% of Income or More on Rent + Utilities	41	25.2%	865
Homeowners Spending 30% of Income or More on Mortgage + Utilities	35	22.4%	279
Average Energy Costs (as % of Income)	30	4.9%	-
Persons without Vehicle Access	33	10.4%	788

Built Environmental Hazards		
Indicator	Relative Exposure Level	Value
Traffic Exposure	Moderate	-
Potential Lead Paint Exposure (Houses Built pre-1960)	Low	37.91%
Cancer Risk from Air Pollution	Low	-
Respiratory Disease Risk from Air Pollution	Low	-
Proximity to Water Pollution Sources	Low	-
PM2.5 Levels in Air, µg/m3	Very High	9.79
Ozone Concentration, ppb	High	46.63
Diesel Particulate in Air, µg/m3	Low	0.62
Proximity to Superfund Sites	High	-
Proximity to Potentially Toxic Industrial Activity	Low	-
Proximity to Hazardous Waste Treatment and Disposal Facilities	Moderate	-

Neighborhood Planning	
Indicator	Description
Community Councils	Mt. Airy Community Council
Community Development Corporations	Mount Airy Community Urban Redevelopment Enterprise
Community Plans	Mt. Airy Plan: Our Future (Ongoing Update)